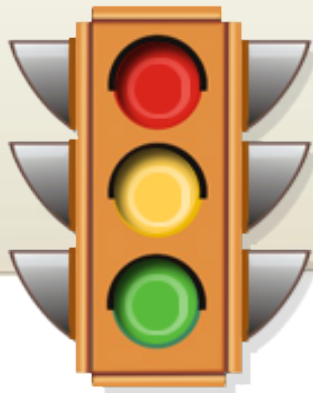




Pupils' Road Safety Programme



29 June 2019

Pupils' Mode of Transport

☐ By **foot** (Pedestrians)



☐ By **bicycles** (Cyclists)

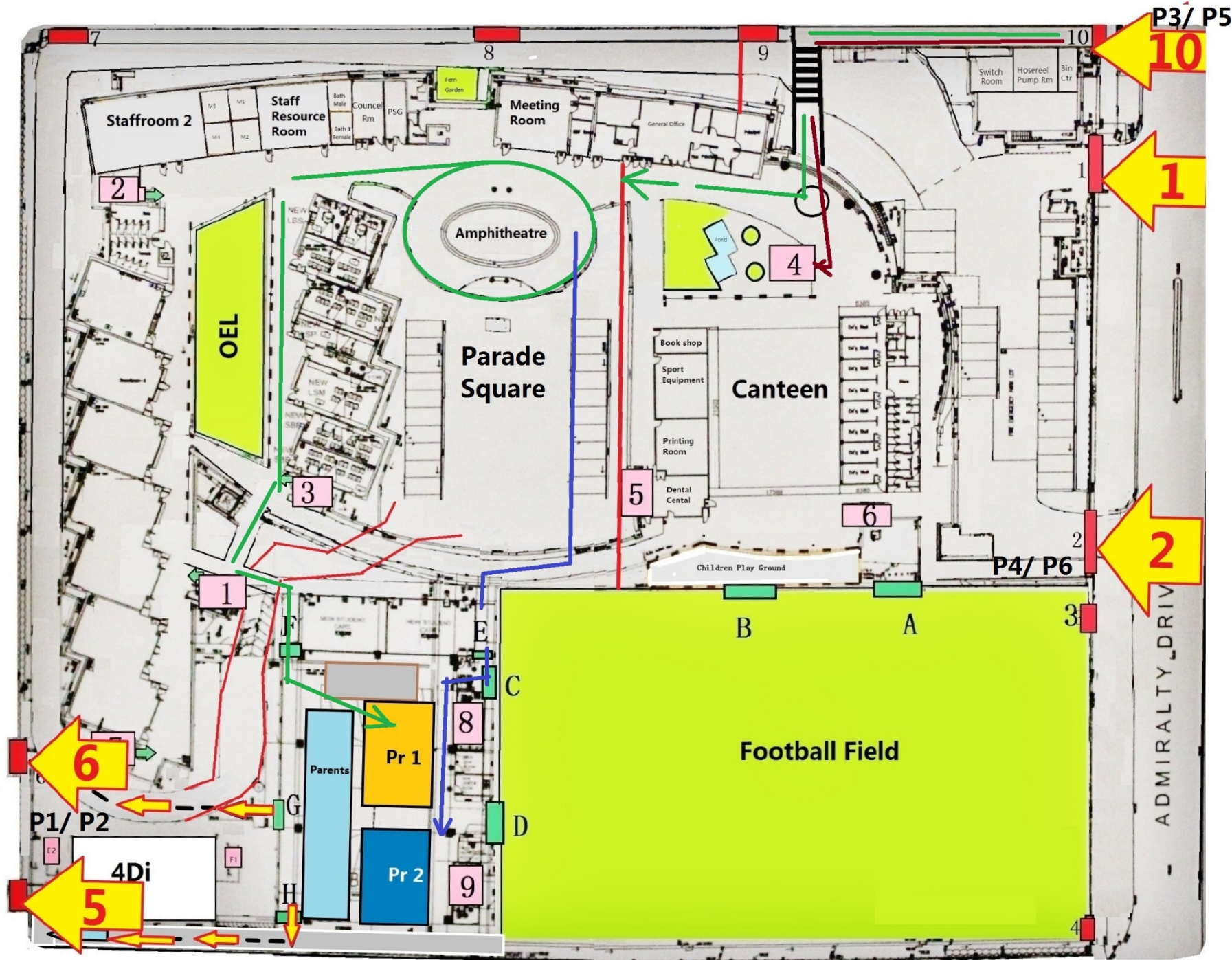


☐ By **vehicles** (Public/School Bus & Car)



Time Schedule for duty

Session	Timing	Days	No. of PVs
Morning	6.30 a.m to 7.30 a.m	Mon to Fri	5
Afternoon	1.15 p.m to 2.15 p.m	Mon to Fri	3



5 specific points for duty

- ❑ **Gate 10** (with the linkway shelter)
- ❑ **Gate 1** (vehicles entering/leaving the school)
- ❑ **Gate 2** (nearest to football field)
- ❑ **Traffic Junction** (opposite school)
- ❑ **Junction** (outside school)

Note: The security guards and OSOs will be facilitating the traffic control at the carpark and pupils' movement respectively.



Position to stand
while on duty.

Gate 10

Roles & Responsibilities (Gate 10)

- ❑ Ensure pupils move in an **orderly manner** and there is **no overcrowding** outside the gate.
- ❑ Remind cyclists to **dismount and push their bicycles** before they enter the gate. Cyclists should always give way to pedestrians.
- ❑ Remind cyclists to **push their bicycles out of the gate** before they cycle home. Cyclists should wait till most of the pupils are dismissed first before they can collect their bicycles.



Gate 1

Roles & Responsibilities (Gate 1)

- ❑ Ensure pupils do **NOT** enter/leave the school through Gate 1.
- ❑ Ensure vehicles do **NOT** enter Gate 1 in the morning.
- ❑ Stop vehicles leaving the school through Gate 1 for pupils to cross the footpath.
- ❑ Direct drivers to **turn left** when leaving the school through Gate 1 after 7 a.m.



Position to stand
while on duty.

Gate 2

Roles & Responsibilities (Gate 2)

- ❑ **Stop the pupils** from **entering the big gate** in the morning.
- ❑ Ensure pupils **enter/leave the school through the small gate** closer to the field.
- ❑ Ensure pupils move in an **orderly manner** and there is **no overcrowding** outside the gate.



Traffic Junction

Roles & Responsibilities (Traffic Junction)

- ❑ Remind pupils to **stop and look out for vehicles** before crossing the road.
- ❑ Remind pupils **NOT** to run and dash across the road when the green man is blinking.

*Note: A teacher will be on duty at the traffic junction to remind pupils to practise **kerb drill**.*



Position to stand
while on duty.

Junction

Roles & Responsibilities (Junction)

- ❑ Remind pupils to **stop and look out for vehicles** before crossing the junction.
- ❑ Remind pupils **NOT** to run and dash across the road.

Procedure when report for duty

- 1) Arrive in school **5 minutes before** your scheduled time.
- 2) Proceed to the PSG Room to **sign in** and remember to **wear the vest**.
- 3) Go to your **respective point** for your duty.
- 4) **Return the vest** to the PSG Room and remember to **sign out** before you leave the school.



PSG Room
(Near Level 1 Lift Lobby)



Vest to wear while doing duty.

Important Notes: DOs



- 1) Be **proactive** and **vigilant** at all times.
Refrain from using your handphone when on duty.
- 2) **Inform PSG via Telegram Channel in advance** if you are late or unable to do your duty on that day.
- 3) Be on duty rain or shine.
The school needs your assistance.

Important Notes: DON'Ts



- 1) Refrain from stopping parents entering the school premise. You can inform them to proceed to the Security Guard Counter or General Office if they have any queries/concerns.
- 2) Refrain from stopping parents jaywalking or crossing the road irresponsibly. You can remind the pupils to use the pedestrian crossing for their own safety.

Thank you
in
ADVANCE

FOR

Looking out for the
Children

